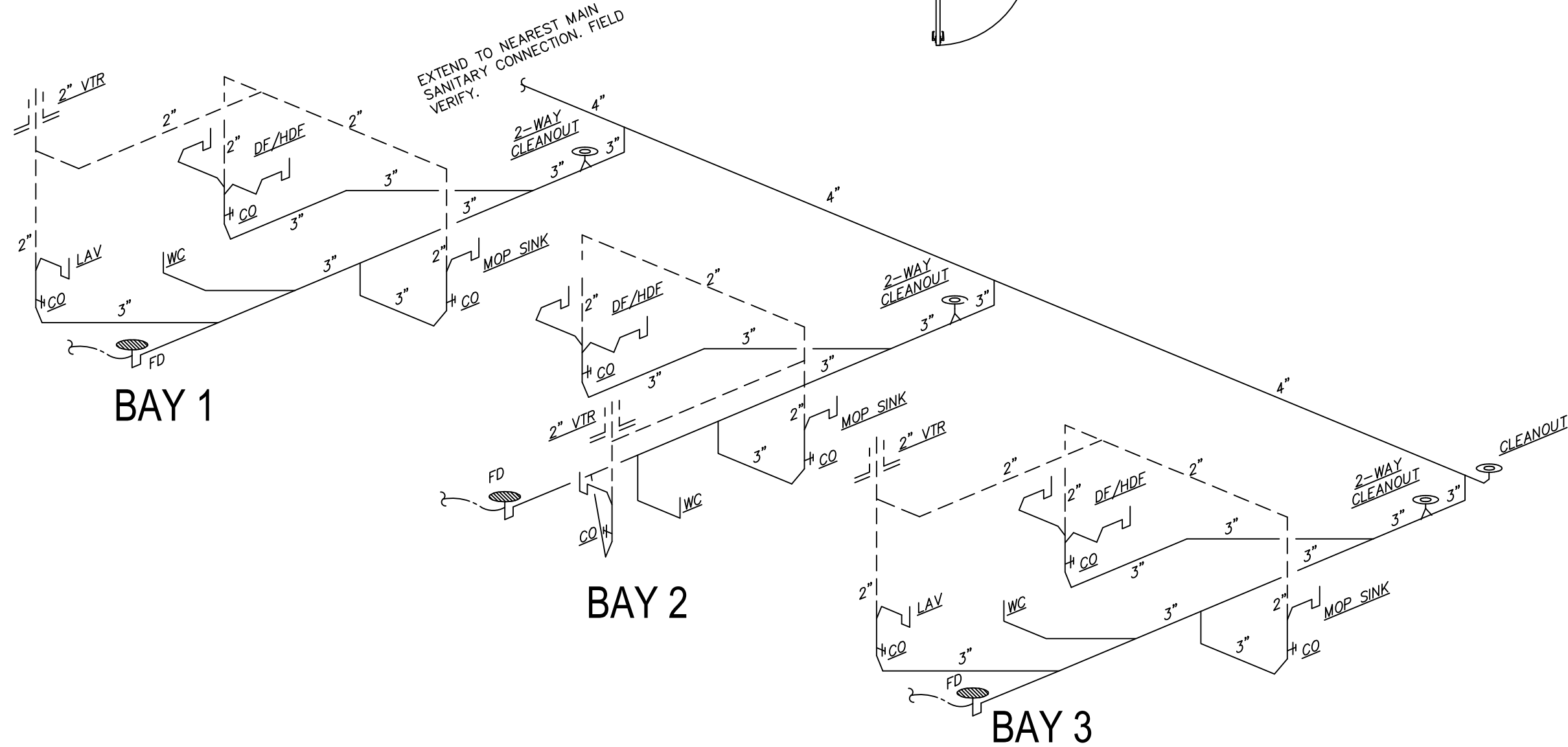
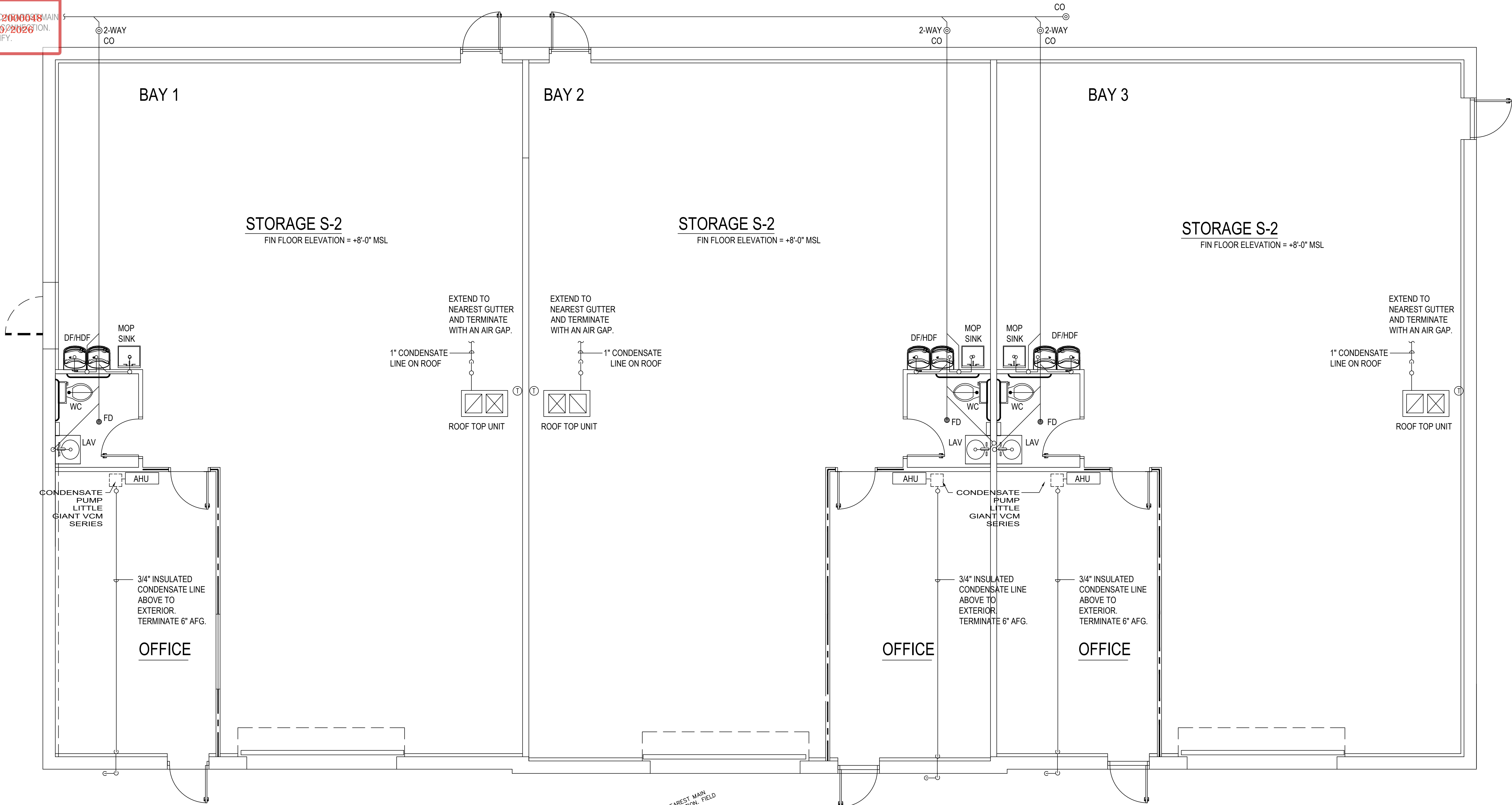


DRC

PROJECT: 2000048
DATE: 05/20/2026
DRAWN BY: J.A.
CHECKED BY: M.J.A.
FIELD VERIFY: J.A.



PROPOSED SANITARY FLOOR PLAN
1/4" = 1'

REVISIONS

BY

MIKAH J. ABBOTT
STATE OF FLORIDA
PE# 98054

1859 S. DIXIE HWY
POMPAHO BEACH, FL 33060
(205) 300-3582

PLUMBING PLANS FOR:
1150 SW 30TH AVE.
POMPAHO BEACH, FL 33069

EVERYTHING ENERGY INC.
1859 S. DIXIE HWY.
POMPAHO BEACH, FLORIDA
EMAIL: autcad587@hotmail.com
energycalc@hotmail.com
PHONE: (561) 334-3170
(954) 776-2003

Drawn By: N.R.
Checked By: M.J.A.

MIKAH ABBOTT
1859 S. DIXIE HWY
POMPAHO BEACH FL
PHONE: 561-334-3170
EMAIL: autcad587@hotmail.com

DATE: 11-12-25
SCALE: 1/4"
PROJECT: 1150 SW 30TH AVE.